

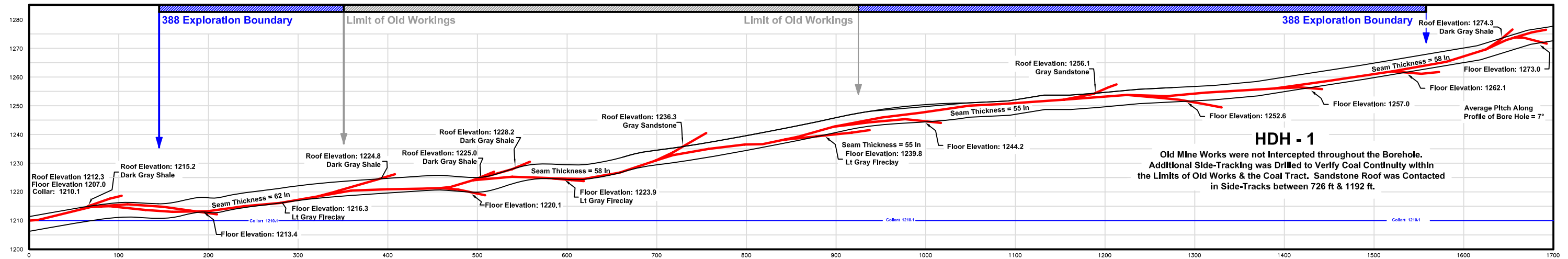
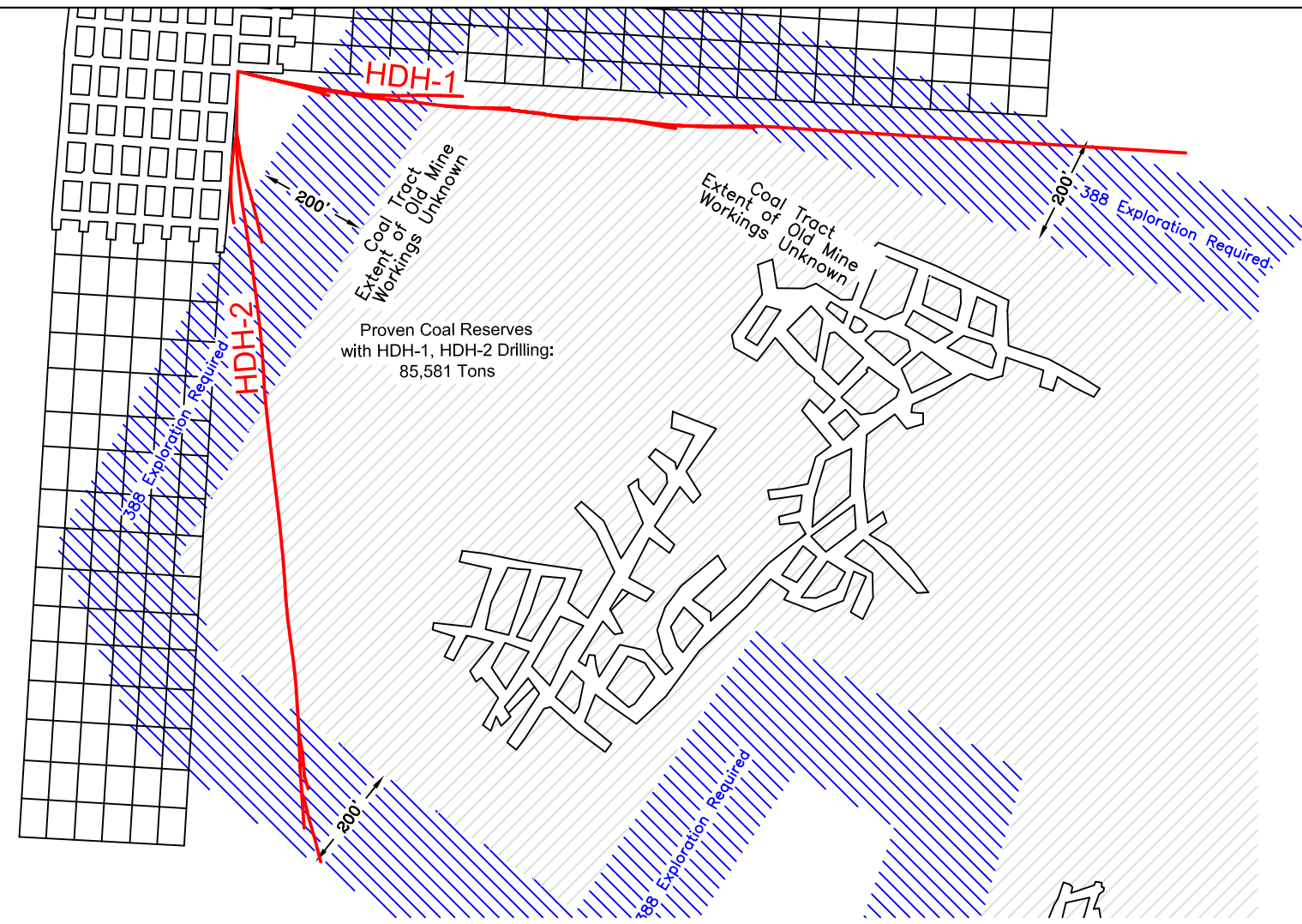
REI Drilling, Inc. directionally drilled numerous exploration boreholes from underground workings and surface highwall locations to delineate the extent of uncharted works initially intercepted by mining. REI Drilling developed tangential boreholes from boreholes that intercepted old workings to help establish the lateral extent of mining and define reserves.

Corporate Office

250 W Berger Ln
 Salt Lake City, UT 84107
 Toll Free: 877.838.0534
 Ph: 801.270.2140
 Fax: 801.281.2880
 Email: dan@reidrilling.com

OLD WORKS EXPLORATION FROM SURFACE





HDH - 1
 Old Mine Works were not intercepted throughout the Borehole. Additional Side-Tracking was Drilled to Verify Coal Continuity within the Limits of Old Works & the Coal Tract. Sandstone Roof was Contacted in Side-Tracks between 726 ft & 1192 ft.

Corporate Office

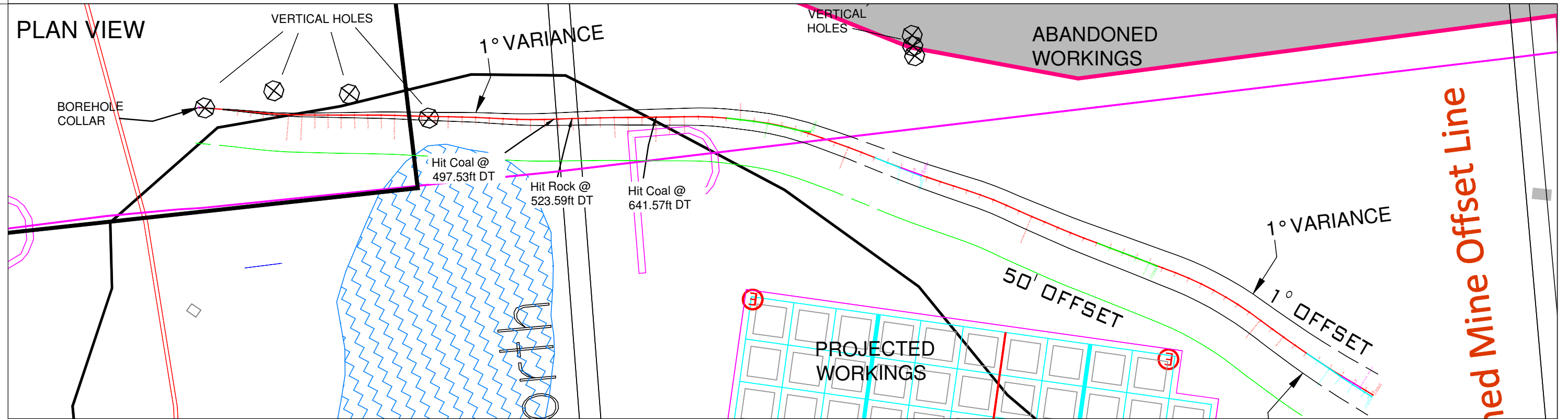
250 W Berger Ln
 Salt Lake City, UT 84107
 Toll Free: 877.838.0534
 Ph: 801.270.2140
 Fax: 801.281.2880
 Email: dan@reidrilling.com

388 EXPLORATION

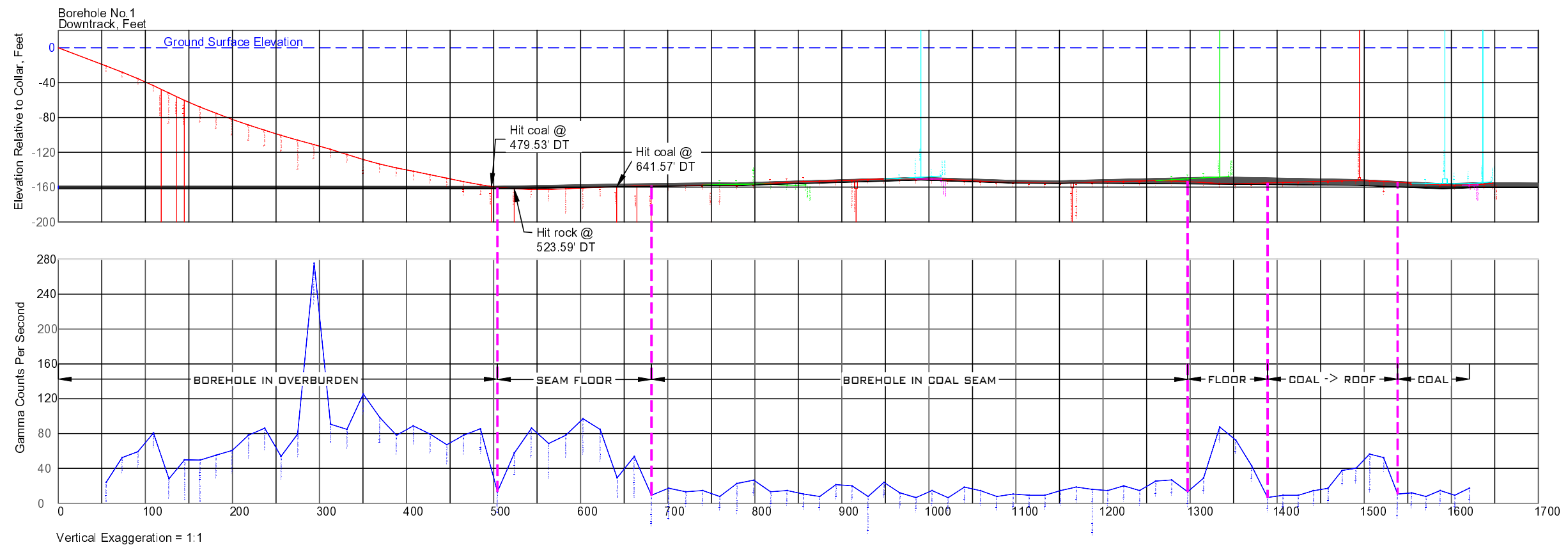


Horizontal directional drilling used as an acceptable alternative under 30 CFR 75.388 (g) has not only given coal producers peace of mind knowing that projected development will safely avoid old workings, but it has also enabled producers to increase production in areas with poorly mapped old workings.

PLAN VIEW



PROFILE



REI Drilling, Inc.

250 W Berger Ln
 Salt Lake City, UT 84107
 Toll Free: 877.838.0534
 Ph: 801.270.2140
 Fax: 801.281.2880
 Email: dan@reidrilling.com

Surface to In-Seam Directional Drilling for Abandoned Mine Verification

REI | DRILLING

REI Drilling, Inc. directionally drilled one (1) surface to in-seam borehole to a depth of 1760 ft for verification of coal continuity between projected and abandoned mine workings at an underground mine in the Illinois Basin. Depth of cover to the coal seam was approximately 160 ft, allowing REI to drill a shallow angle surface to in-seam borehole and eliminate the need to bring a drill rig underground. REI used its MWD steering tool with on-board focused gamma to aid in coal seam interception at the target depth, minimizing side-track footage, and keeping the borehole in-seam to total depth.